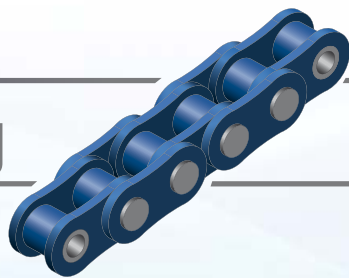


MoraviaŘetězy



Racks



Gears



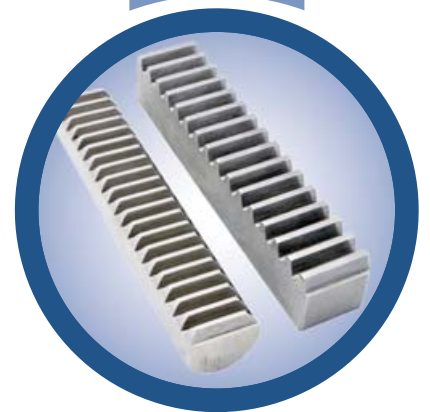
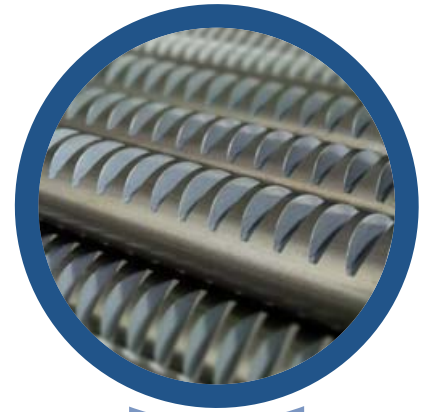
*Timing
pulleys*



Gear Drives

Racks

- Production of gearing in the **M1 - M20** modules
- Milling of racks up to the length of **3000 mm** in our own **CNC milling centre**
- Straight and helical gearing, $\pm 30^\circ$
- Production of gearing on various profiles - square, circular, rectangular
- Production of double-sided gearing
- Serial and custom production
- **Rack grinding** - quality of grinded gearing meets Precision Classes 4, 5, 6 or 7
- Standard quality of gearing meets Precision Class 8 or 9
- Steel milling with induction hardening option directly in our production plant
- Other materials according to the customer specifications (stainless steel, bronze, aluminium alloy, or plastic)
- Heat treatment - quenching and tempering, induction hardening, case hardening, nitriton
- Surface finish options - galvanising, chroming, blackening and in the case of aluminium alloys anodizing
- Further finishing per customer drawings - milling, drilling etc.
- Custom production in the imperial system available as well



In 2015, we successfully commissioned the **Kesel RMS 3200 CNC milling centre** in our technological fleet. We offer high-precision rack milling in the M1 - M20 modules up to the length of 3,000 mm. Swivel axis allows the milling of helical tooth profiles up to 30° on each side.

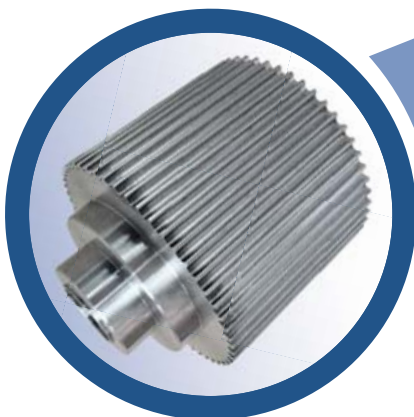
Technical Parameters:

X-axis (horizontal, table axis): 3,200 mm
Y-axis (vertical, cutting depth): 230 mm
Z-axis (horizontal, infeed): 370 mm
Swivel axis helical tooth profile: $\pm 30^\circ$
Clamping range of vices: 3,400 x 345 mm
Positioning accuracy: < 0.002 mm



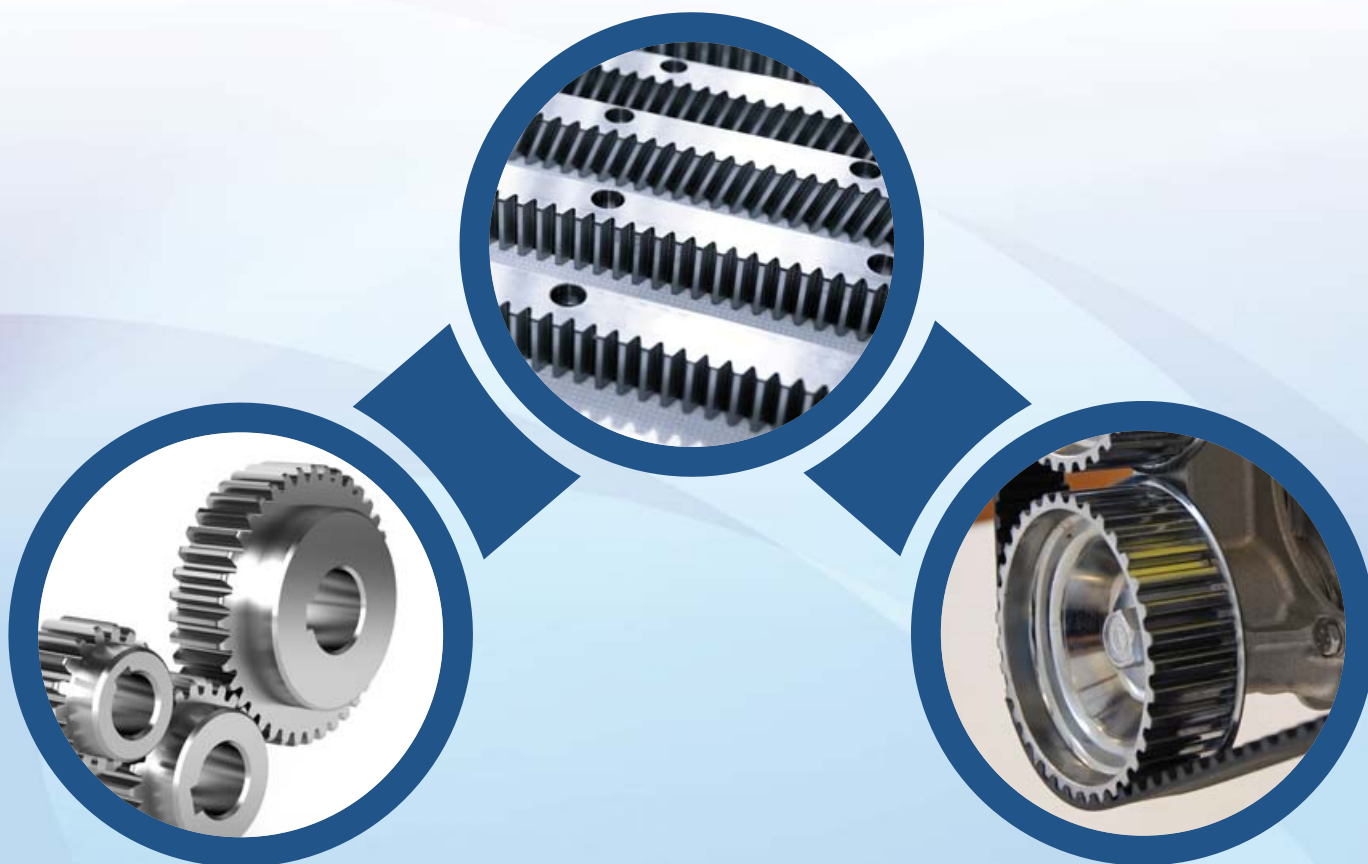
Gears

- Gearing production in modules identical to those of the racks - M1 - M20
- Milling of gears up to the 3,200 mm diameter
- Gear grinding up to the 360/400 mm diameter
- Internal involute toothing
- Use of other materials per the customer specifications (stainless steel, bronze, aluminium alloy, plastic)
- Heat treatment - case hardening, nitriding
- Surface finish options - galvanising, chroming, blackening, in the case of aluminium alloys, anodizing
- Further treatment per the customer specifications - internal toothing, drilling etc.

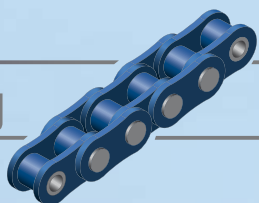


Timing Pulleys

- Type T (T-profile belts)
- Type HTD (M-profile belts)
- Type AT (AT-profile belts)
- Type CTB (L, HL, XL, XH-profile belts)
- Custom pulley production per drawings
- Design both with full gear hub or Taper bore
- Pulley materials - steel, stainless steel, aluminium alloys
- Pressing of the side walls to the specified thickness
- Pulley balancing upon the customer request
- Clamping plates for timing belts



MoraviaŘetězy



Contact:

MORAVIA ŘETĚZY a.s.

Hulínská 1799/1 (Magnetron a.s. premises)

CZ - 767 01 Kroměříž

Czech republic

Tel: +420 573 334 106

Fax: +420 573 330 556

e-mail: sales@moravia-retezy.cz

www.moravia-retezy.cz

www.moravia-retezy.cz